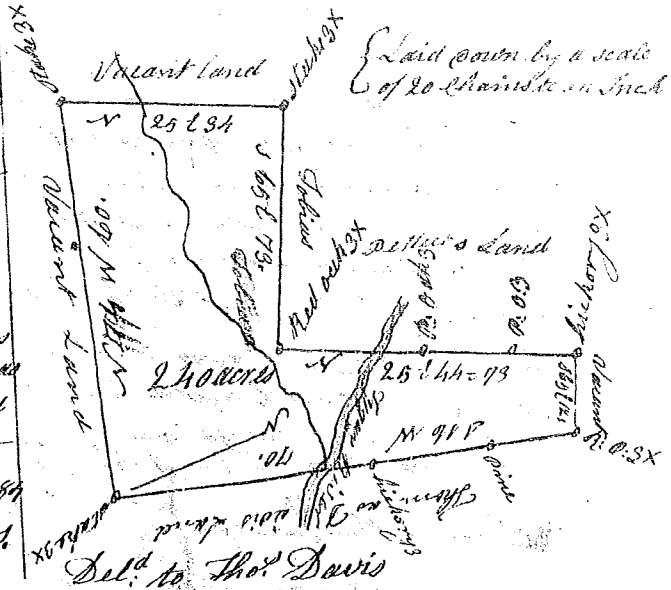


State of South Carolina (1834)

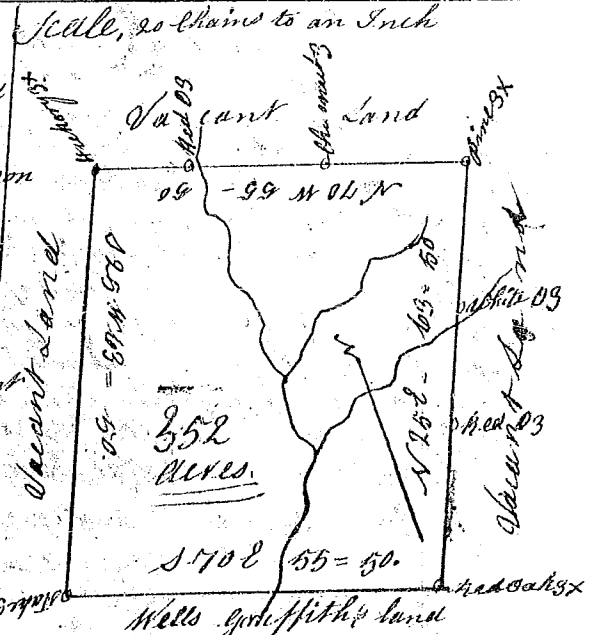
Pursuant to a warrant from John Thomas Esq. Commissioner of Locations bearing date the 29th day of May 1784 I have admeasured and laid out unto Thomas Davis a tract of Land containing two hundred and forty acres situate in ninety six district west of the old Indian boundary on both sides of Tigger River bounding on the S.E. and N.E. on land laid out for Tobias Pettet & S.W. on lands laid out for Thomas Davis all other sides on Vacant Land and hath such form and Marks as the above Plat represents



Surveyed the 6th day of June 1784
 Recorded 25th Augt 1784
 George Salmon D.S.

State of South Carolina

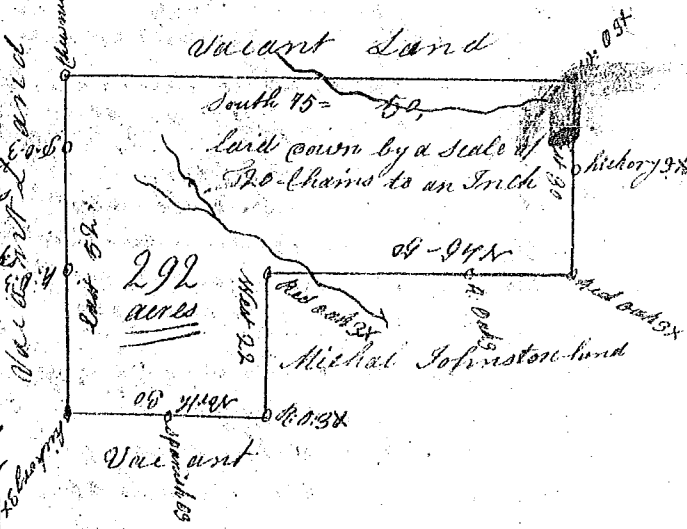
Pursuant to a warrant from John Thomas Esq. Commissioner of Locations dated the 1st day of June 1784 I have admeasured and laid out unto William Turner Thomson a tract of Land containing three hundred and fifty two acres situate lying and being in ninety six District East of the old Indian Boundary line on a branch of Sawson's fork of Pacolale River bounding S.E. on lands laid out for Wells Griffith all other sides on Vacant Land and hath such form and Marks as the annexed Plat Represents Surveyed the 21st Day of July 1784 - George Salmon D.S.



Recorded the 25th of August 1784

State of South Carolina

Pursuant to a warrant from John Thomas Esq. Commissioner of Locations dated the 21st day of July 1784 I have admeasured and laid out unto John Thomas Esq. a tract of Land containing two hundred and ninety two acres situate in ninety six district west of the old Indian Boundary on the head branches of Michland Creek of Meedy River and Fresh Creek of Inoree, bounding N.W. and N.E. on lands laid out for Michael Johnston all other sides on Vacant Land and hath such form and Marks as the above Plat represents; Surveyed the 3rd day of August 1784, George Salmon D.S.



Recorded the 25th day August 1784